

For
Lease

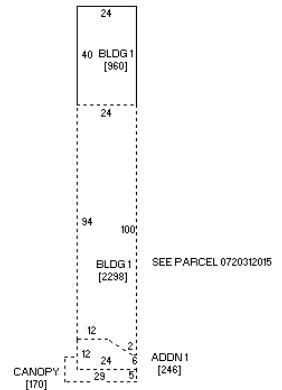
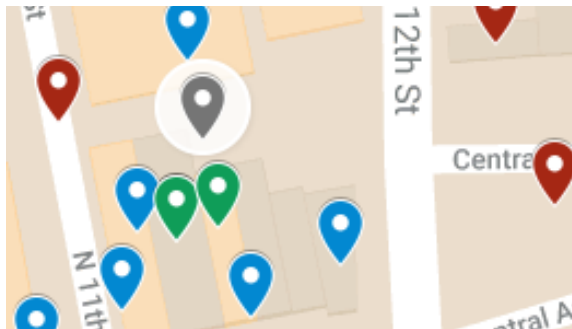
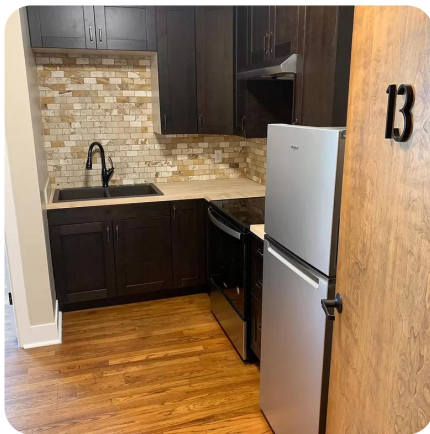


AVAILABLE SPACES

13 N 11th St

300 SQ-FT

OFFERED AT
\$500/MO



- 2 Floors
- Parking:
- Built: 1890
- Long Term Lease Negotiable

The space is 22'x13' including the bathroom and utility closet. There is a 14 sq. ft. bump-out at the entrance which makes it exactly 300 sq. ft. Space has a 3-phase electrical service to accommodate any type of business service need.

Tom & Andrea Groff
(515) xxx-xxxx



FOOD



RETAIL



OFFICE



RESIDENTIAL



ANYTHING



MAIN STREET
FORT • DODGE